



Marie Curie Actions
Human resources and mobility

6 Sixth Framework Programme

HYPER-I-NET (MRTN-CT-2006-035927)

Mid-Term Review

Munich, Germany, March 9th 2009

Presenter:	Yuliya Tarabalka
Roles in the project:	ESR Researcher Member of HYPER-I-NET Management Board
Partner:	University of Iceland, Iceland, Partner #13 [UNIS]



Norsk Elektro Optikk AS



WAGENINGEN UR

For quality of life

Scientific issues



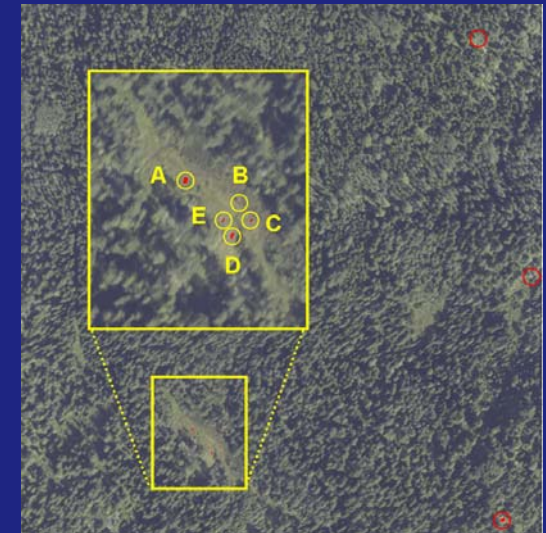
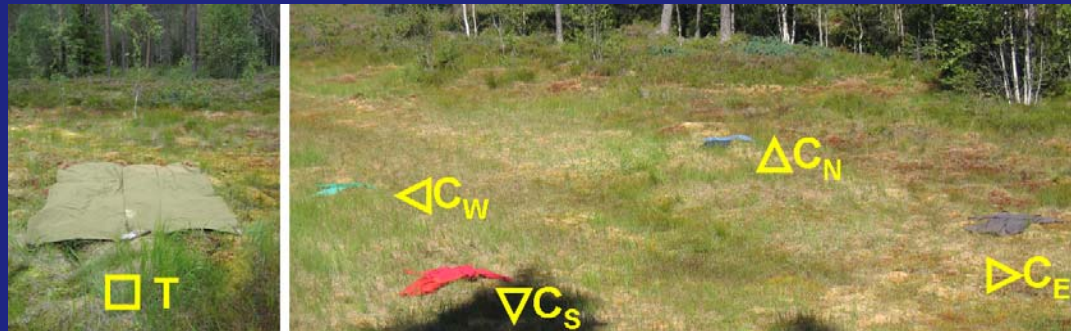
- **Job title:** Spectral-spatial classification in hyperspectral imagery
- **Research path:**

Start date	Place / Name of supervisor	Duration (months)	Short description of work
July 6, 2007	Norwegian Defence Research Establishment (FFI), Norway / Torbjørn Skauli	6	- General introduction to hyperspectral imaging (from acquisition to high-level analysis) - Participation in field trials - Research in image processing (statistical methods and parallel processing implementations)
Jan 6, 2008	University of Iceland (UNIS), Iceland / Jón Atli Benediktsson	10	- Definition and implementation of advanced algorithms for segmentation and classification of hyperspectral data
Nov 1, 2008	Grenoble Institute of Technology (INPG), France / Jocelyn Chanussot	6	- Development of new algorithms incorporating spectral and spatial information
May 1, 2009	University of Iceland (UNIS), Iceland	14	

Research achievements



1. Real-time anomaly detection using a graphics processor

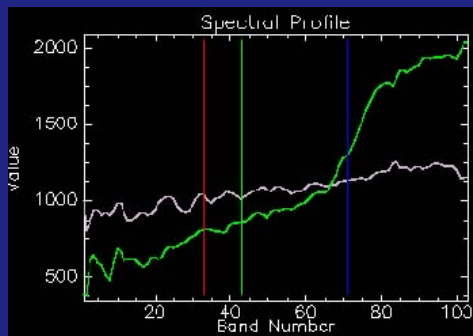


- Publications:

- ✓ Y. Tarabalka, T. V. Haavardsholm, I. Kåsen, and T. Skauli, "Parallel processing for normal mixture models of hyperspectral data using a graphics processor," in *Proc. of IGARSS, Boston, USA, 2008*, pp. II-990 – II-993.
- ✓ T. Skauli, I. Kåsen, T. Haavardsholm, A. Kavara, Y. Tarabalka, and Ø. Farsund, "Status of the norwegian hyperspectral technology demonstrator," in *Proc. of NATO SET-130 "NATO Military sensing symposium"*, Orlando, Florida, USA, 2008, pp. F5-1–F5-6.
- ✓ Y. Tarabalka, T. V. Haavardsholm, I. Kåsen, and T. Skauli, "Real-time anomaly detection in hyperspectral images using multivariate normal mixture models and GPU processing," *Journal of Real-Time Image Processing*, 2008, pp. 1-14.

2. Spectral-spatial classification of hyperspectral imagery

Spectral
classification



+ Spatial info



- Publications:

- ✓ *Y. Tarabalka, J. Chanussot, J. A. Benediktsson, J. Angulo, and M. Fauvel, "Segmentation and classification of hyperspectral data using watershed," in Proc. of IGARSS '08, Boston, USA, 2008, pp. III-652 – III-655.*
- ✓ *Y. Tarabalka, J. A. Benediktsson, and J. Chanussot, "Classification of hyperspectral data using Support Vector Machines and adaptive neighborhoods," in Proc. of the 6th EARSeL SIG IS workshop, Tel Aviv, Israel, 2009.*
- ✓ *Y. Tarabalka, J. A. Benediktsson, and J. Chanussot, "Spectral-spatial classification of hyperspectral imagery based on partitional clustering techniques," accepted for publication, IEEE Trans. Geos. and Remote Sens.*

- **International journals (1 published, 1 accepted):**

- ✓ *Y. Tarabalka, J. A. Benediktsson, and J. Chanussot, "Spectral-spatial classification of hyperspectral imagery based on partitional clustering techniques," accepted for publication, IEEE Trans. Geos. and Remote Sens.*
- ✓ *Y. Tarabalka, T. V. Haavardsholm, I. Kåsen, and T. Skauli, "Real-time anomaly detection in hyperspectral images using multivariate normal mixture models and GPU processing," Journal of Real-Time Image Processing, 2008, pp. 1-14.*

- **International conferences (3 published, 1 accepted, 1 submitted):**

- ✓ *Y. Tarabalka, T. V. Haavardsholm, I. Kåsen, and T. Skauli, "Parallel processing for normal mixture models of hyperspectral data using a graphics processor," in Proc. of IGARSS, Boston, USA, 2008, pp. II-990 – II-993.*
- ✓ *Y. Tarabalka, J. Chanussot, J. A. Benediktsson, J. Angulo, and M. Fauvel, "Segmentation and classification of hyperspectral data using watershed," in Proc. of IGARSS '08, Boston, USA, 2008, pp. III-652 – III-655.*
- ✓ *T. Skauli, I. Kåsen, T. Haavardsholm, A. Kavara, Y. Tarabalka, and Ø. Farsund, "Status of the norwegian hyperspectral technology demonstrator," in Proc. of NATO SET-130 "NATO Military sensing symposium", Orlando, Florida, USA, 2008, pp. F5-1–F5-6.*
- ✓ *Y. Tarabalka, J. A. Benediktsson, and J. Chanussot, "Classification of hyperspectral data using Support Vector Machines and adaptive neighborhoods," in Proc. of the 6th EARSeL SIG IS workshop, Tel Aviv, Israel, 2009.*
- ✓ *Y. Tarabalka, J. Chanussot, J. A. Benediktsson, "Classification based marker selection for watershed transform of hyperspectral images," submitted to IGARSS'09, Cape Town, South Africa.*

Networking issues



1. Work and close collaboration in 3 research institutions

- FFI (Norway) + UNIS (Iceland) + INPG (France)

2. Hyperspectral data: provided by DLR, UNIPV and NEO

3. Participation in Management Board Meetings

4. Video-conferences, conferences & summer schools

5. External connections: NASA (the USA), INRIA, Paris School of Mines, ESIEE (France),...

6. Member of international scientific societies

- IEEE, IEEE Geoscience and Remote Sensing Society, IEEE Women In Engineering

1. Realised training components

- 2 scientific university courses: Pattern Recognition (Norway), Digital Image Processing (Iceland)
- Introduction to Research Studies and the Scientific Community course (Iceland)
- 2 HYPER-I-NET E-Learning courses
- 3 international summer schools (Spain, France, the Netherlands)
- Norwegian and Icelandic language courses

2. Teaching

- 24 hours of practical sessions in Image Processing (France)

3. Two short visits to other partners

- University of Iceland, Iceland (14-17 October 2007)
- Norsk Elektro Optikk AS, Norway (4 January 2008)

4. Participation in international conferences

- IEEE International Geoscience & Remote Sensing Symposium (IGARSS) 2007
- IGARSS 2008 (1 oral talk, 1 poster presentation, chaired a poster session)
- 6th EARSeL SIG IS workshop 2009 (1 oral talk)

5. Reviewer for:

- IGARSS 2008, IGARSS 2009
- EUSIPCO 2008
- *IEEE Transactions on Geoscience and Remote Sensing*
- Journal of Real-Time Image Processing

6. Conferences committees

- Organizing Committee Member of the First IEEE GRSS Workshop on Hyperspectral Image and Signal Processing (WHISPERS), 2009, Grenoble, France

Other aspects



1. Sorting out formalities with respect to:

- Transnational mobility
- Local administrative issues

2. Situation with a salary in Iceland

Thanks



- To Torbjørn Skauli, Jón Atli Benediktsson, Jocelyn Chanussot and Antonio Plaza for their collaboration, help and support with my research work and in administrative issues!
- To my friends for everything!
- For your attention!